



For better management and tracking of parts

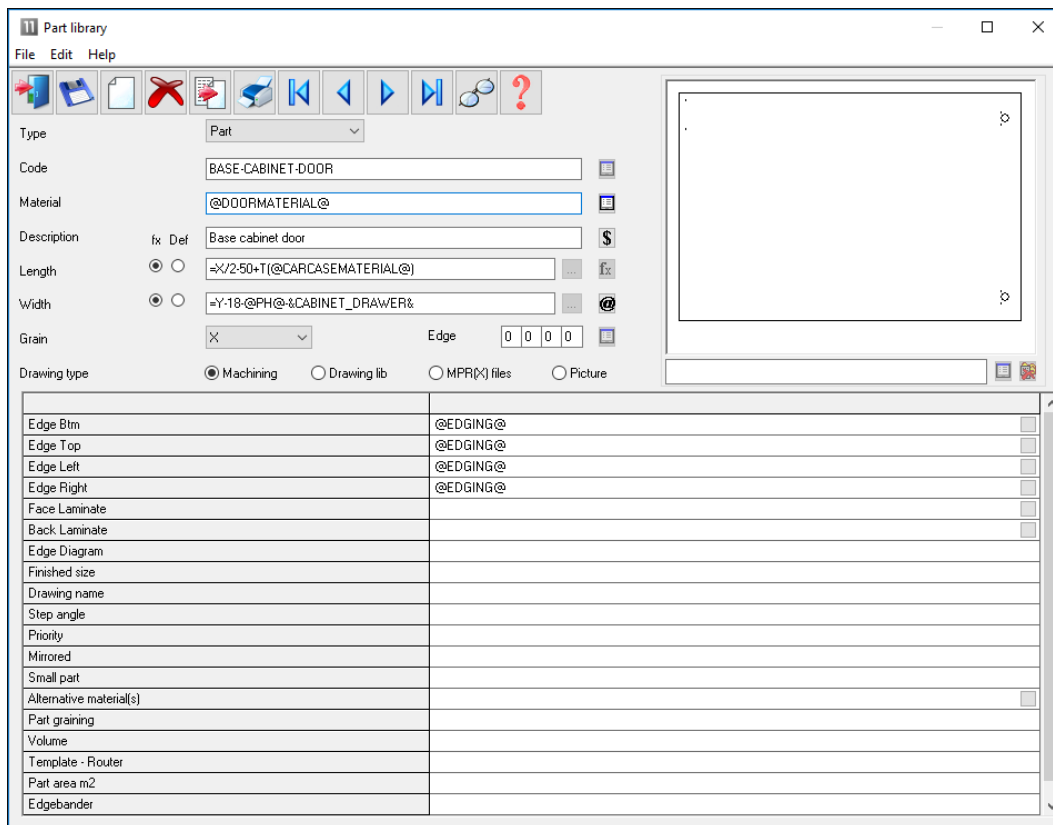
The Parts Library feature provides a database for parts and used with the form and label designer provides extensive facilities for managing extra data for parts.

It is especially useful where the same parts are used again and again in different cutting lists or where extra information is needed for each part for later processing, admin, or bar codes,

Parts can be added to any cutting list with minimum data entry - this saves times and avoids costly mistakes.

Part library

The data entry screen provides an easy way to enter part details.

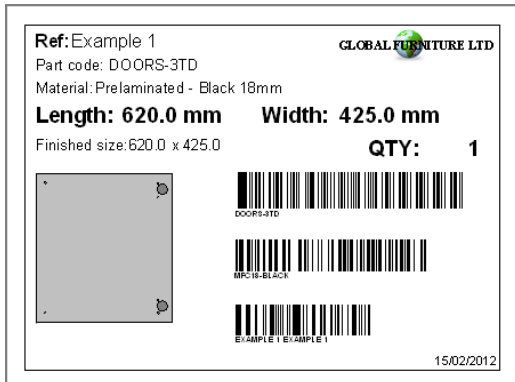


Part library

The part details include the standard items such as material code, length and width but any amount of user defined information can be stored with each part using extra fields (information boxes). This extra data can also be included on labels and reports to help with later processing of the part.

The part library can also include a picture of the part from the Machining library or a graphics file such as BMP, JPG or MPR(X).

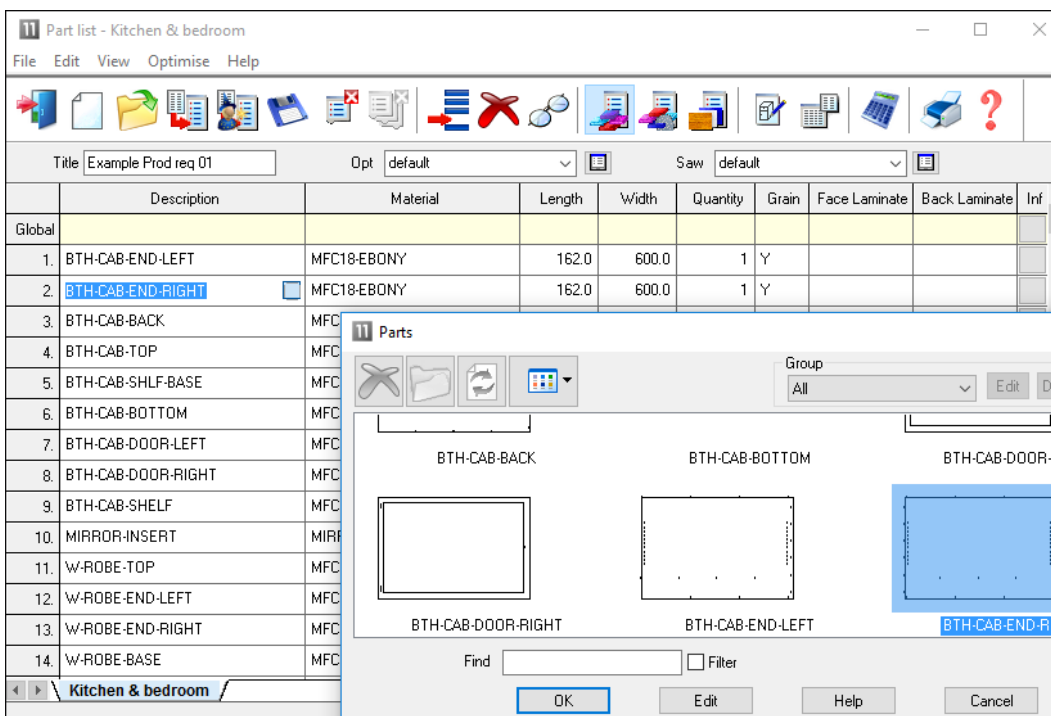
For some parts it is often useful to include a picture of the part on a label to help identify the part quickly.



Part label

At any cutting list the items in the library can be accessed by a single click and the part can be added to the list.

Typically only one or two items of information need to be adjusted such as the quantity required or possibly the material to use.



Cutting list - part library

Form & Label designer

The program includes a designer screen so that almost any style of label (typically a small adhesive label) or a full form (a one page report or a route card) can be set up.

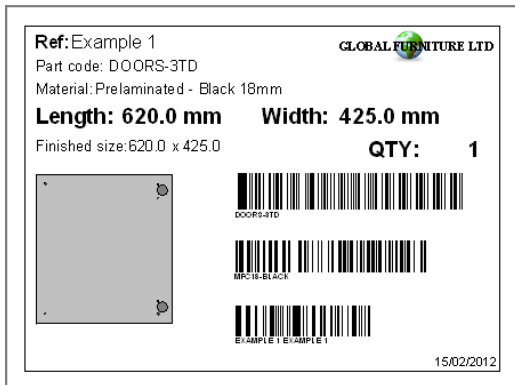
These are labels or forms for printing in the office

The data on the form or label can be chosen from any of the data set up for each part in the Part database. For example:-

Material code

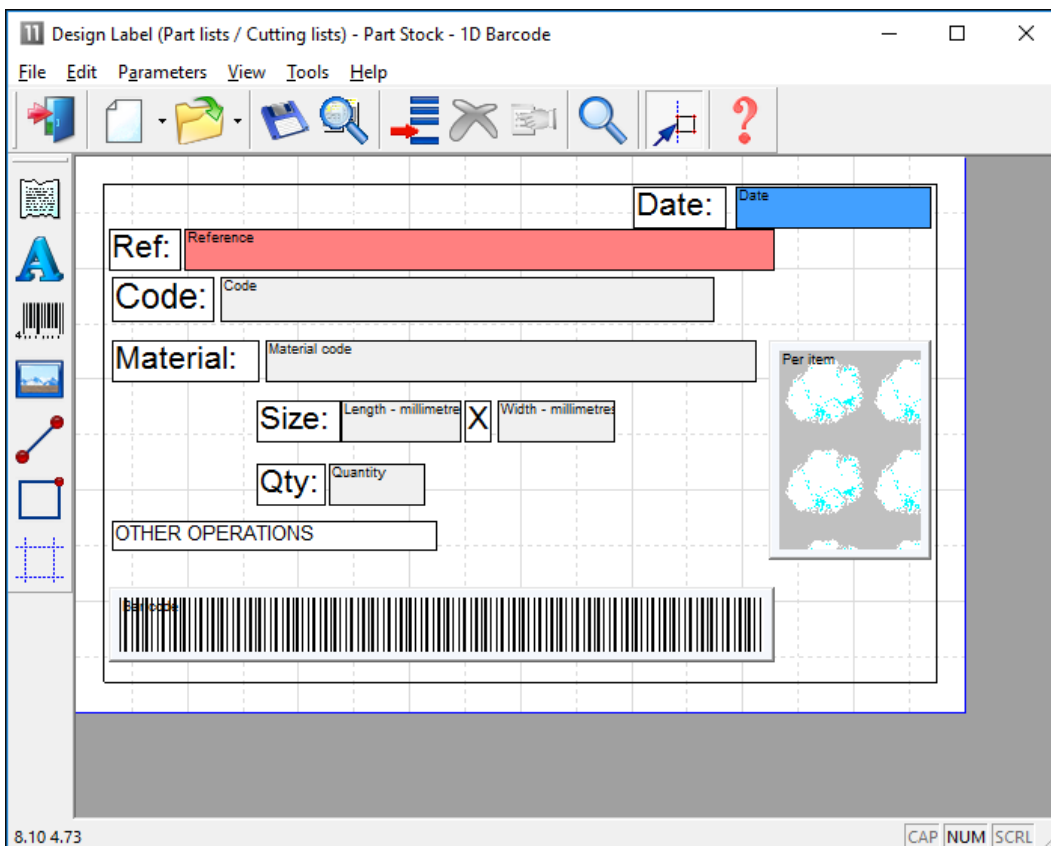
Length
 Width
 ...
 Part drawing
 User defined details
 Barcodes
 Logos
 ...

The designer allows for the creation of a barcode for any of the items on the form or label, for example, barcodes for the part code and quantity.



Part label

The designer screen is easy to use and a variety of templates are already set up to use as a starting point.



Label designer

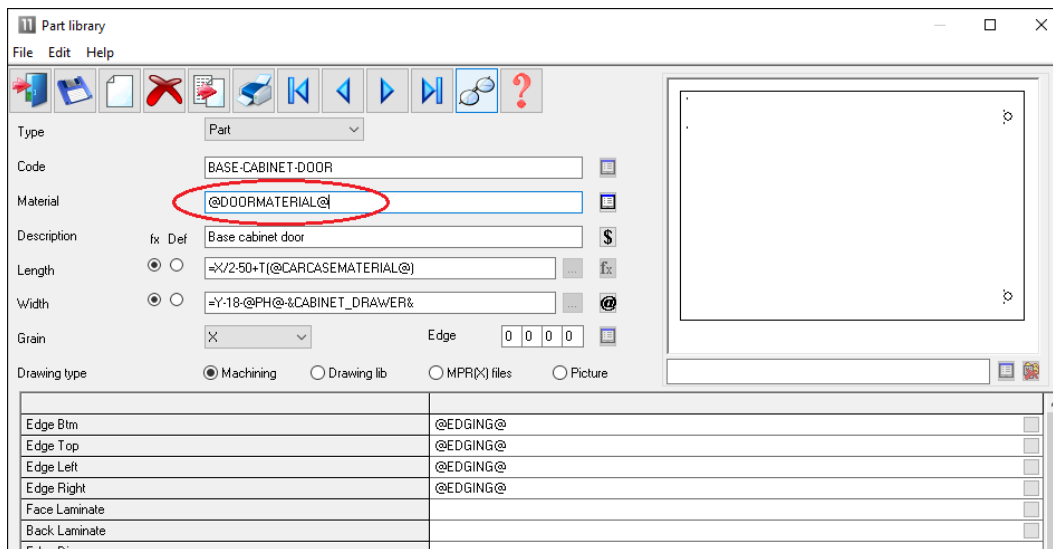
Each label or form is fully customisable. The designers include several options to help create effective designs.

- Grid, guidelines and snap options - to help place items on the design
- Different templates - with alternative designs and styles
- Quick preview - to check the layout
- Data preview - to make an accurate check of the layout

Parts & Labels with Products & Quotes (PQ) module

When used with the PQ module the Part library extends the flexibility of the program since it can be used to define parts using variables and formulae for the part information.

The same part entry in the part library can be used for a range of colours, materials or sizes.



Part library and PQ module

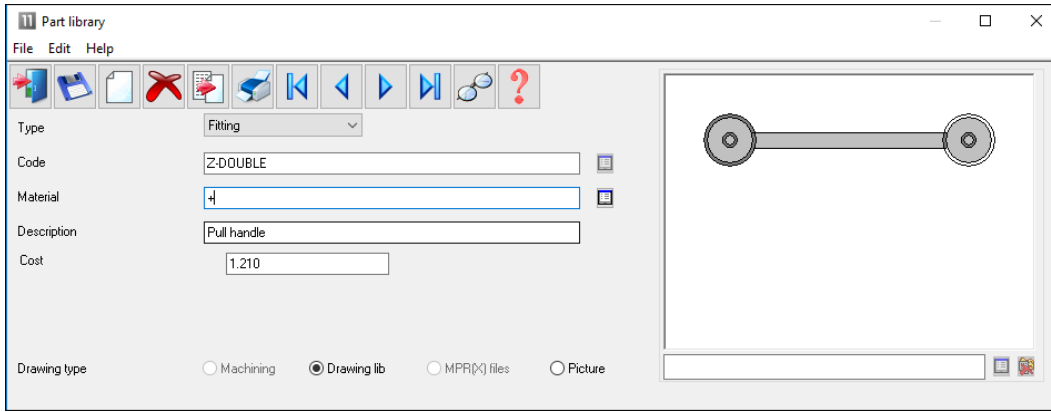
In this example the Material is defined by a variable '@DOORMATERIAL@' and the Length and Width are defined by formulae. This single part library entry can produce the correct specification for a range of cabinet doors in different materials, colours and sizes.

Fittings, Sundry parts, Operations

Requires the PQ module

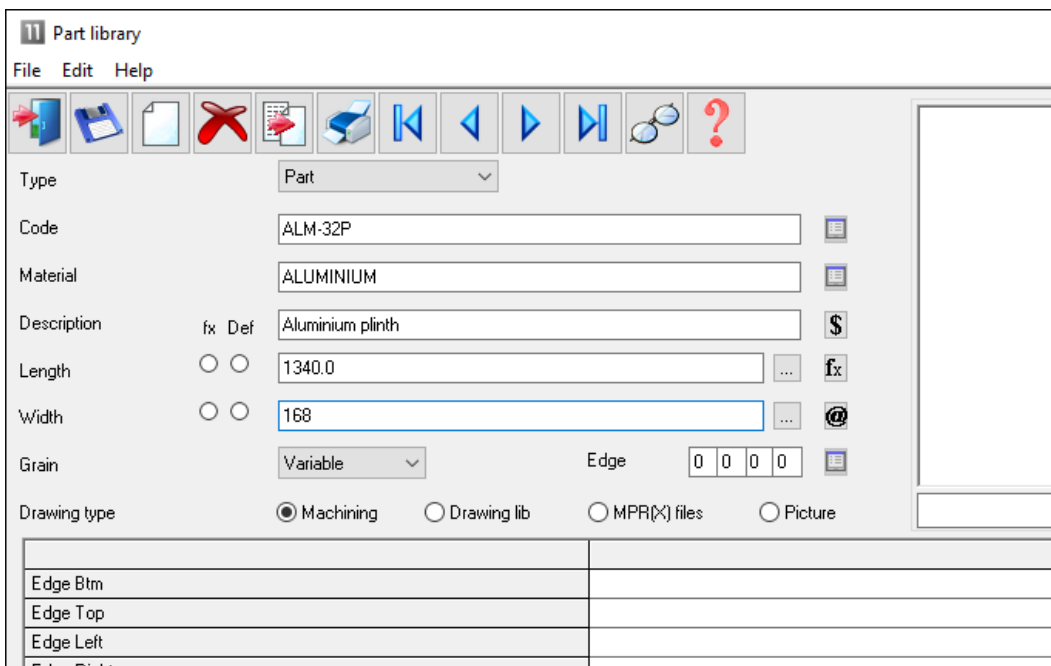
The parts database can also include fittings (hardware).

Fittings can include typical ironmongery items such handles, hinges and brackets and also larger 'bought in' appliances.



Part library - Fittings

The library can also include 'bought in' or sundry parts that are required but are ready to use.

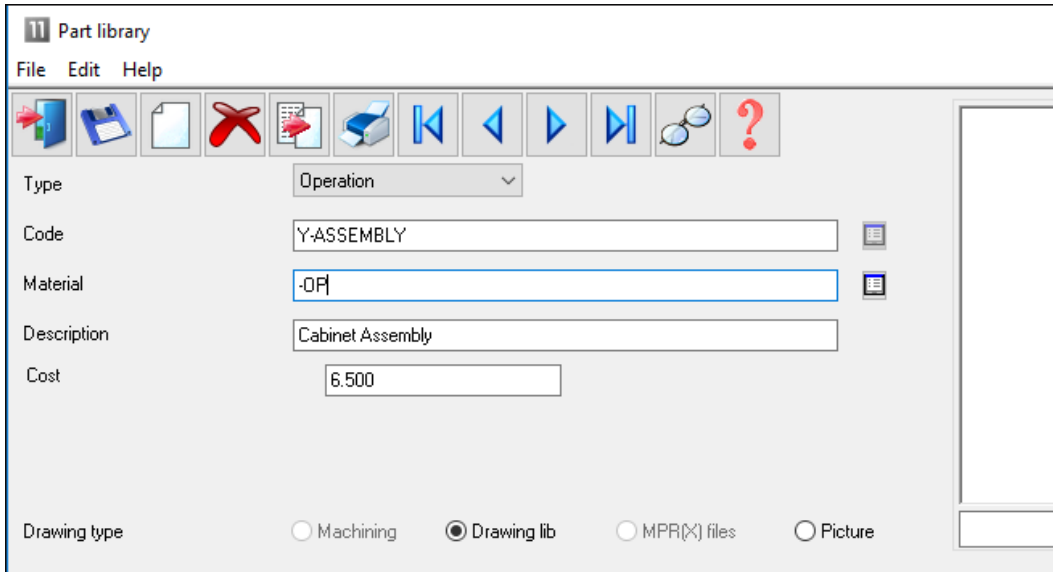


sundry parts

Part library -

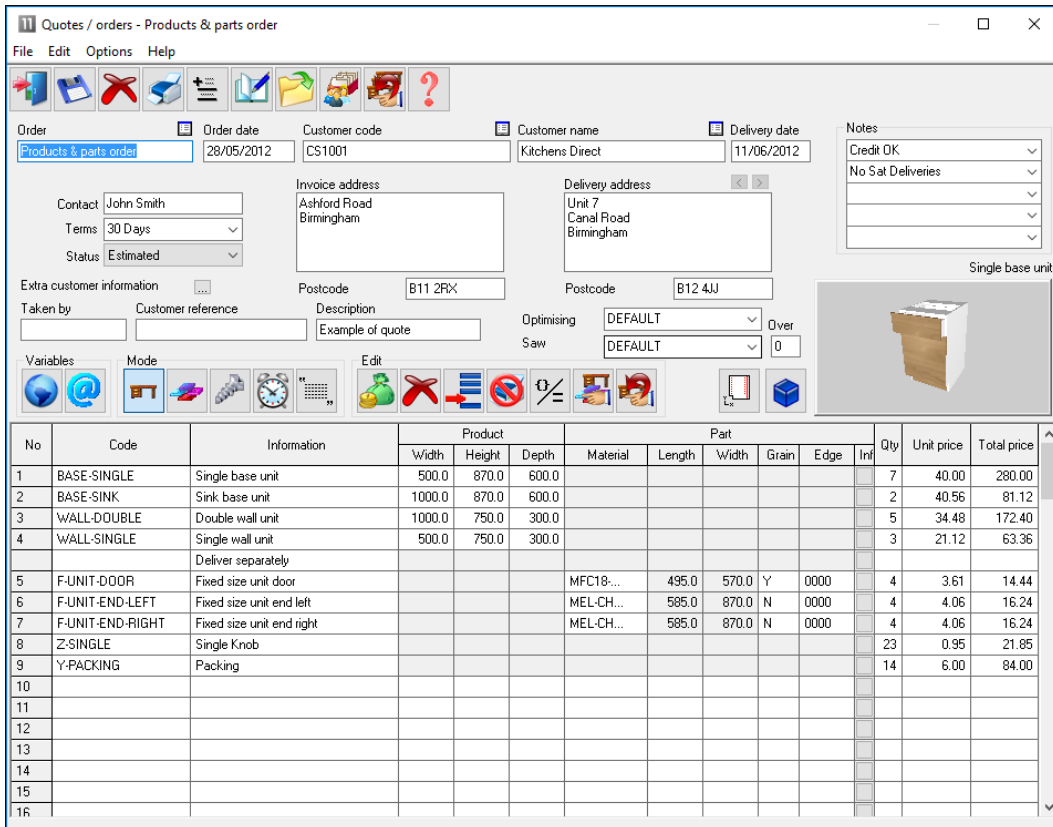
The operations required for each part can also be included in the database.

These are items such as, clamping, assembly, packing - where these can be allocated on a 'per part' basis.



Part library - operations

These items are added to the 'Order' so that a full specification (and costing) of the job is available.



Quote / order

Parts & Labels with the Machining Interface

The Part library is fully integrated with the Machining Interface; the part picture can be a machining drawing from the parametric Machining library. So any pictures and details created in the machining library can be passed through to the part label or form.

The part library can also be integrated with:-

- External bitmap (BMP, JPG) drawing
- WoodWop MPR(X) drawings

Parts & Labels with the Online PC option

The Online PC option can be used for designing and printing labels at the saw, it is typically used where there is no saw controller or the saw controller only has limited set of options.

Information and labels are automatically sent to the Online PC option to allow the viewing and printing of part information at the Saw.

Summary of Parts and Labels

- The form and label designer is not directly used for printing labels at the saw (other than via the Online PC option). It can be used to create designs for some saw controllers (e.g. Cadmatic) but there are often also label design options with many saw controllers.

	Parts & Labels	Parts & Labels + Online PC
Maximum items in library	99999	99999
Parts	•	•
Sundry parts	•	•
Fittings	•	•
Operations	•	•
Maximum length for part code	50	50
Form designer and templates	•	•
Label designer and templates	•	•
Parametric parts	•	•
Parametric drawings	•	•
External part drawings	•	•
Printing at Office	•	•
Printing at Saw		•
Import parts to database	•	•
Import external drawings to database	•	•

- The number of designs for the form designer or label designer is unlimited.*
- Printing at the Saw is typically handled by software at the saw controller.*